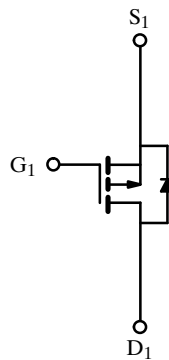
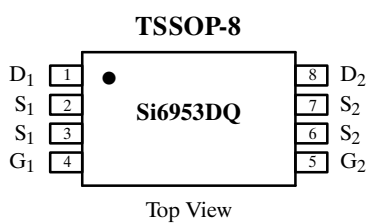


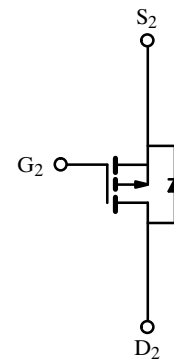
Dual P-Channel Enhancement-Mode MOSFET

Product Summary

V_{DS} (V)	$r_{DS(on)}$ (Ω)	I_D (A)
-20	0.17 @ $V_{GS} = -10$ V	± 1.9
	0.32 @ $V_{GS} = -4.5$ V	± 1.3



P-Channel MOSFET



P-Channel MOSFET

Absolute Maximum Ratings ($T_A = 25^\circ\text{C}$ Unless Otherwise Noted)

Parameter	Symbol	Limit	Unit
Drain-Source Voltage	V_{DS}	-20	V
Gate-Source Voltage	V_{GS}	± 20	V
Continuous Drain Current ($T_J = 150^\circ\text{C}$) ^a	I_D	$T_A = 25^\circ\text{C}$	± 1.9
		$T_A = 70^\circ\text{C}$	± 1.5
Pulsed Drain Current	I_{DM}	± 15	A
Continuous Source Current (Diode Conduction) ^a	I_S	-1.25	A
Maximum Power Dissipation ^a	P_D	$T_A = 25^\circ\text{C}$	1.0
		$T_A = 70^\circ\text{C}$	0.64
Operating Junction and Storage Temperature Range	T_J, T_{stg}	-55 to 150	$^\circ\text{C}$

Thermal Resistance Ratings

Parameter	Symbol	Limit	Unit
Maximum Junction-to-Ambient ^a	R_{thJA}	125	$^\circ\text{C}/\text{W}$

Notes

a. Surface Mounted on FR4 Board, $t \leq 10$ sec.

Subsequent updates to this data sheet may be obtained via facsimile by calling Siliconix FaxBack, 1-408-970-5600. Please request FaxBack document #1805.

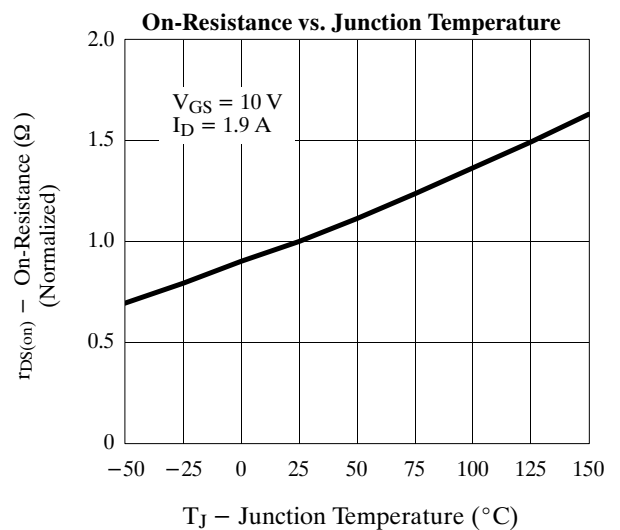
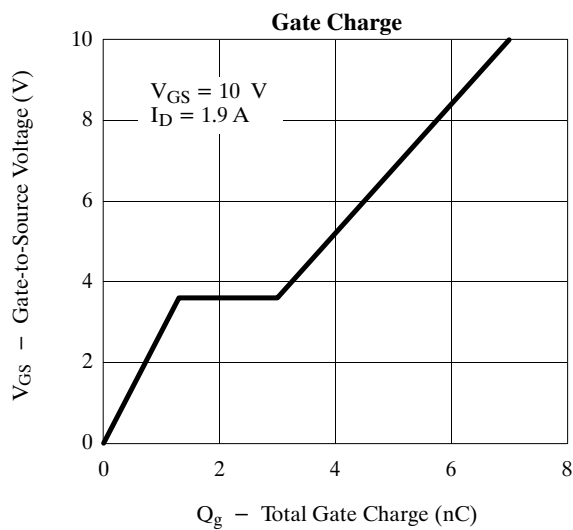
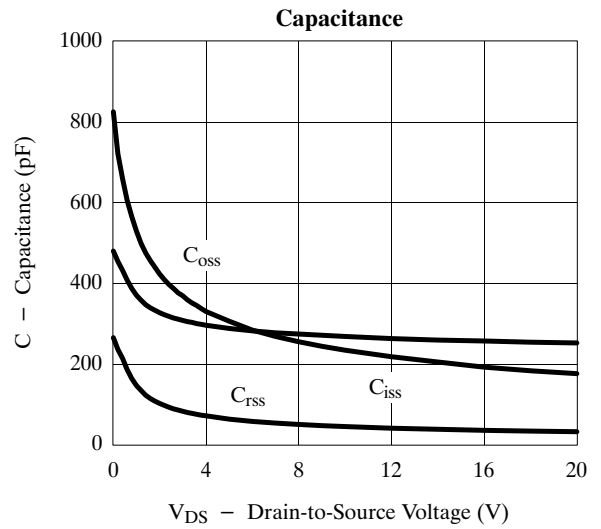
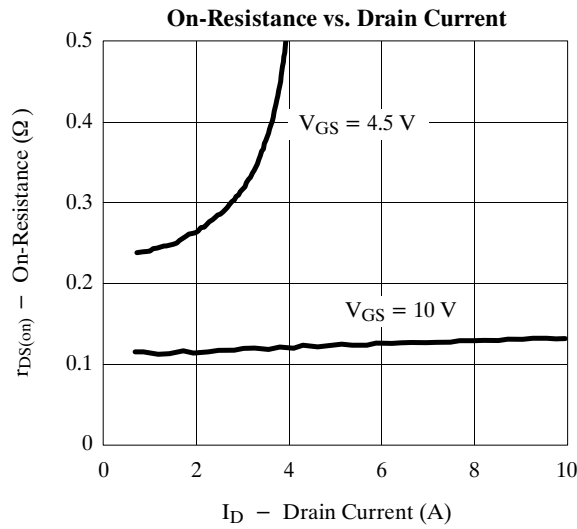
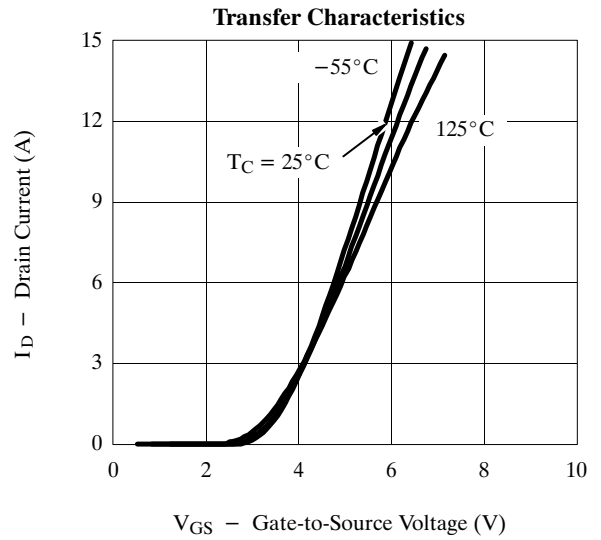
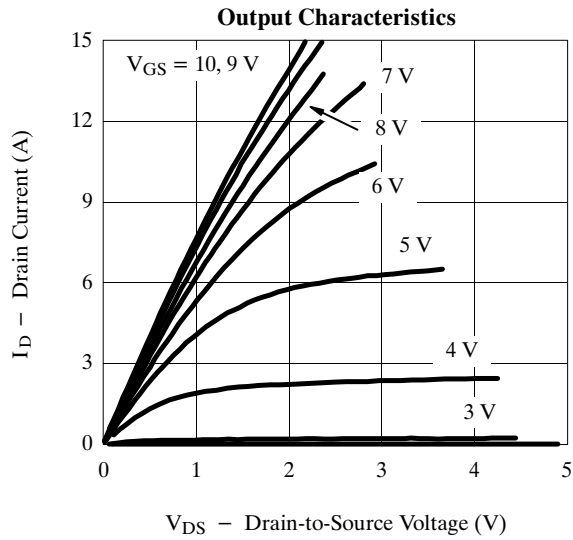
Specifications ($T_J = 25^\circ\text{C}$ Unless Otherwise Noted)

Parameter	Symbol	Test Condition	Min	Typ	Max	Unit
Static						
Gate Threshold Voltage	$V_{GS(th)}$	$V_{DS} = V_{GS}, I_D = -250\ \mu\text{A}$	-1.0			V
Gate-Body Leakage	I_{GSS}	$V_{DS} = 0\ \text{V}, V_{GS} = \pm 20\ \text{V}$			± 100	nA
Zero Gate Voltage Drain Current	I_{DSS}	$V_{DS} = -20\ \text{V}, V_{GS} = 0\ \text{V}$			-1	μA
		$V_{DS} = -20\ \text{V}, V_{GS} = 0\ \text{V}, T_J = 55^\circ\text{C}$			-25	
On-State Drain Current ^a	$I_{D(on)}$	$V_{DS} = -5\ \text{V}, V_{GS} = -10\ \text{V}$	-10			A
		$V_{DS} = -5\ \text{V}, V_{GS} = -4.5\ \text{V}$	-1.5			
Drain-Source On-State Resistance ^a	$r_{DS(on)}$	$V_{GS} = -10\ \text{V}, I_D = 1.9\ \text{A}$		0.13	0.17	Ω
		$V_{GS} = -4.5\ \text{V}, I_D = 1.3\ \text{A}$		0.26	0.32	
Forward Transconductance ^a	g_{fs}	$V_{DS} = -15\ \text{V}, I_D = -1.9\ \text{A}$		3		S
Diode Forward Voltage ^a	V_{SD}	$I_S = -1.25\ \text{A}, V_{GS} = 0\ \text{V}$		0.8	-1.2	V
Dynamic^b						
Total Gate Charge	Q_g	$V_{DS} = -10\ \text{V}, V_{GS} = -10\ \text{V}, I_D = -1.9\ \text{A}$		7	10	nC
Gate-Source Charge	Q_{gs}			1.3		
Gate-Drain Charge	Q_{gd}			1.7		
Turn-On Delay Time	$t_{d(on)}$	$V_{DD} = -10\ \text{V}, R_L = 10\ \Omega$ $I_D \cong -1\ \text{A}, V_{GEN} = -10\ \text{V}, R_G = 6\ \Omega$		9	20	ns
Rise Time	t_r			12	25	
Turn-Off Delay Time	$t_{d(off)}$			17	30	
Fall Time	t_f			6	15	
Source-Drain Reverse Recovery Time	t_{rr}	$I_F = -1.25\ \text{A}, di/dt = 100\ \text{A}/\mu\text{s}$		35	70	

Notes

- a. Pulse test; pulse width $\leq 300\ \mu\text{s}$, duty cycle $\leq 2\%$.
b. Guaranteed by design, not subject to production testing.

Typical Characteristics (25°C Unless Otherwise Noted)



Typical Characteristics (25°C Unless Otherwise Noted)

